

DEPARTMENT OF THE ARMY TECHNICAL MANUAL

GENERAL SUPPORT MAINTENANCE REPAIR PARTS AND SPECIAL TOOLS LIST (INCLUDING DEPOT MAINTENANCE REPAIR PARTS AND SPECIAL TOOLS) ACCELEROMETER SET FIXTURE MX-4043/ASW-12(V)

Headquarters, Department of the Army, **Washington, D. C.**
26 November 1973

Current as of 15 December 1972

	Paragraph	Page
Section I	INTRODUCTION	
	Scope	1-1
	General	1-1
	Explanation of columns	1-3
	Special information	1-4
	Location of repair parts	1-5
	Federal supply codes for manufacturers	1-6
	Recommendations for maintenance publication improvements	1-7
II.	REPAIR PARTS FOR GENERAL SUPPORT. AND DEPOT MAINTENANCE SPECIAL TOOLS. TEST AND SUPPORT EQUIPMENT FOR GENERAL, SUPPORT AND DEPOT MAINTENANCE (NOT APPLICABLE)	2-1
III.	INDEX-FEDERAL STOCK NUMBER AND REFERENCE NUMBER CROSS-REFERENCE TO FIGURE AND ITEM NUMBER OR REFERENCE DESIGNATION	3-1
IV.	INDEX-REFERENCE DESIGNATION CROSS-REFERENCE TO PAGE NUMBER	4-1

*This manual supersedes so much of T 11-6625-443-35P, 17 January 1962, as pertains to MX-4043/ASW-12(V).

SECTION I

INTRODUCTION

1-1. **Scope**

This manual lists repair parts required for the performance of general support, and depot maintenance of the MX-4043/ASW-12(V).

1-2. **General**

This Repair Parts list is divided into the following sections:

a. Repair Parts for Direct Support, General Support, and Depot Maintenance-Section II. A list of repair parts authorized for the performance of maintenance at the general support and depot level.

b. Index-Federal Stock Number and Reference Number Cross-Reference to Figure and Item Number or Reference Designation-Section III. A list of Federal stock numbers in ascending numerical sequence, followed by a list of reference number in ascending alphanumeric sequence; cross-referenced to the illustration figure number and reference designation.

c. Index-Reference Designation Cross-Reference to Page Number-Section II? A list of reference designations cross-referenced to page numbers.

1-3. **Explanation of Columns**

The following provides an explanation of columns in the tabular lists:

a. Source, Maintenance, and Recoverability Codes (SMR), Column 1.

(1) Source code indicates the selection status and source for the listed item. Source codes are:

<i>Code</i>	<i>Explanation</i>
P	Repair parts which are stocked in or supplied from the GSA/DSA, or Army supply system, and authorized for use at indicated maintenance categories.
P 2	Repair parts which are procured and stocked for insurance purposes because the combat or military essentiality of the end item dictates that a minimum quantity be available in the supply system.
P 9	Assigned to items which are NSA design controlled: unique repair parts, special tools, test measuring and diagnostic equipment, which are supplied by the Army COMSEC logistic system and which are not subject to the provisions of AR 380-41.

<i>Code</i>	<i>Explanation</i>
P10	Assigned to items which are NSA design controlled: special tools, test, measuring and diagnostic equipment for COMSEC support , which are accountable under the provisions of AR 330-41, and which are stocked and supplied by the Army COMSEC logistic system.
M	Repair parts which are not procured or stocked, but are to be manufactured at indicated maintenance levels.
G	Major assemblies that are procured with PEMA funds for initial issue only as exchange assemblies at DSU and GSU level. These assemblies will not be stocked above DS and GS level or returned to depot supply level.

(2) Maintenance code indicates the lowest category of maintenance authorized to install the listed item. The maintenance level codes are:

<i>Code</i>	<i>Explanation</i>
C	Operator/crew
0	Organizational maintenance
F	Direct support maintenance
H	General support maintenance
D	Depot maintenance

(3) Recoverability code indicates whether un-serviceable items should be returned for recovery or salvage. Items not coded are expendable. Recoverability codes are:

<i>Code</i>	<i>Explanation</i>
R	Repair parts and assemblies that are economically reparable at DSU and GSU activities and normally are furnished by supply on an exchange basis.
A	Assemblies which are not procured or stocked as such, but are made up of two or more units. Such component units carry individual stock numbers and descriptions, are procured and stocked separately, and can be assembled to form the required assembly at indicated maintenance categories.
X	Parts and assemblies which are not procured or stocked and the mortality of which normally is below that of the applicable end item or component. The failure of such part or assembly should result in retirement of the end item from the supply system.

Code	Explanation
X 1-	Repair parts which are not procured or stocked. The requirement for such items will be filled- by use of the next higher assembly or component.
X2-	Repair parts which are not stocked. The indicated maintenance category requiring such repair parts will attempt to obtain same through cannibalization. Where such repair parts are not obtainable through cannibalization, requirements will be requisitioned, with accompanying justification, through normal supply channels.
S -	Repair parts and assemblies which are economically repairable at DSU and GSU activities and which normally are furnished by supply on an exchange basis. When items are determined by a GSU to be uneconomically repairable, they will be evacuated to a depot for evaluation and analysis before final disposition.
T -	High dollar value recoverable repair parts which are subject to special handling and are issued on an exchange basis. Such repair parts normally are repaired or overhauled at depot maintenance activities.
U -	Repair parts specifically selected for salvage by reclamation units because of precious metal content, critical materials, or high dollar value reusable casings or castings.

b. Federal Stock Number, Column 2. Indicates the Federal stock number assigned to the item and will be used for requisitioning purposes.

c. Description, Column 3. Indicates the Federal item name and any additional description of the item required. A part number or other reference number is followed by the applicable five-digit Federal supply code for manufacturers in parentheses.

d. Unit of Measure (U/M), Column 4. A two-character alphabetic abbreviation indicating the amount or quantity of the item upon which the allowances are based, e.g., ft, ea, pr, etc.

e. Quantity Incorporated in Unit, Column 5. Indicates the quantity of the item used in the assembly group. Subsequent appearances of the same item in the same assembly are indicated by the letters "REF."

f Allowances (30-Day GS Maintenance, 1 Year Per Equipment (Contingency), and Depot Maintenance) Columns 7, 8, and 9. Items authorized for requisition as required are identified by an asterisk in the allowance column.

g. Illustrations, Column 10.

(1) Figure number, Column 10a. Indicates the figure number of the illustration in which the item is shown.

(2) Item number or reference designation, Column 10b. Indicates the reference designation used to identify the item in the illustration.

1-4. Special Information

a. The following publications pertain to Accelerometer Test Fixture MX-4043/ASW-12(V):

TM 11-6625-519-12 Operator and Organizational Maintenance Manual: Test Set, Altitude Control TS-1643/ASW-12(V), Test Set Displacement, Gyroscope TS-1644/ASW-12(V), Vibrating Machine, Gyroscope MX-3722/ASW-12(V), Fixture, Test Gyroscope MX-3723/ASW-12(V), Test Set, Attitude Reference Control TS-1659/ASW-12(V), Test Set, Coupler TS-1661/ASW-12(V), Test Set, Coupler TS-1652/ASW-12(V), Test Set, Collective Pitch Command Control TS-1651/ASW-12(V), Test Set, Altitude Control TS-1656/ASW-12(V), Test Set, Automatic Controller TS-1658/ASW-12(V), Test Set, Rotary Transducer TS-1657/ASW-12(V), Test Set, Gyro Control TS-1660/ASW-12(V), Table, Tilting, Gyro Instrument Testing MX-4708/ASW-12(V), Fixture, Test, Accelerometer MX-4043/ASW-12(V), Test Set, Interlock Control TS-1738/ASW-12(V), Test Set, Directional Control Panel-Acceleration Monitor TS-1912/ASW-12(V).

TM 11-6625-519-34 DS and GS Maintenance Manual: Test Set, Altitude Control TS-1643/ASW-12(V), Test Set, Displacement Gyroscope TS-1644/ASW-12(V), Vibrating Machine, Gyroscope MX-3722/ASW-12(V), Fixture, Test, Gyroscope MX-3723/ASW-12(V), Test Set, Attitude Reference Control TS-1659/AS W-12 (V), Test Set, Coupler TS-1661/ASW-12(V), Test Set, Coupler TS-1652/ASW-12(V), Test Set, Collective Pitch Command Control TS-1651/ASW-12(V), Test Set, Attitude Control TS-1656/

ASW-12(V), Test Set, Automatic Controller TS-16581
 ASW/12(V), Test Set, Rotary Transducer TS-1657/ASW-12(V), Test Set, Gyro Control TS-1660/ASW-12(V), Table, Tilting, Gyro Instrument Testing MX-4708/ASW-12(V), Fixture, Test, Accelerometer MX-4043/ASW-12(V), Test Set, Interlock Control TS-1738/ASW-12(V), Test Set, Directional Control Panel-Acceleration Monitor TS-1912/ASW-12(V)

b. Parts which require manufacture at a category higher than that authorized for installation will indicate in the source column the higher category.

1-5. Location of **Repair Parts**

a. This manual contains two cross-reference indexes (sec III and sec IV) to be used to locate a repair part when either the Federal stock number, reference number (manufacturer's part number), or reference designation is known. The first column in each index is prepared in numerical or alphanumeric sequence in ascending order. When a Federal stock number is not listed, or not known, refer to the reference number (manufacturer's part number) immediately following the last listed Federal stock number.

b. When the Federal stock number or reference number is known, follow the procedures given in (1) and (2) below.

(1) Refer to the index of Federal stock numbers and reference numbers (sect. III) and locate the Federal stock number or reference number. The Federal stock number or reference number is cross-referenced to the applicable figure and reference designation.

(2) When the reference designation is determined, refer to the reference designation index (sec IV). The reference designations are listed in ascending order and are cross-referenced to the page number

on which they appear in the repair parts list (sec II). Refer to the page number noted in the index and locate the reference designation in the repair parts list (col. 10b).

c. When the reference designation is known, follow the procedures given in b(2) above.

d. When neither the Federal stock number, reference number, nor reference designation is known, identify the part in the illustration and follow directions given in c above; or scrutinize column 3 of the repair parts list (sec II).

1-6. Federal Supply Code for Manufacturers

Code	Manufacturer
00141	PIC Design Corp.
01226	Vilter Engineering Corp.
07187	Sperry Flight Systems, Division Sperry Rand Corp.
10109	EMP Electronics Inc.
56232	Sperry Gyroscope Company, Division Sperry Rand Corp.
58474	The Superior Electric Company
70318	Allmetal Screw Products Company, Inc.
72619	Dialight Corp.
76545	Mueller Electric Company
76883	The Ohio Thermometer Company
77820	Bendix Corp., Electrical Components Division
81349	Military Specifications
91663	Armel Electronics Inc.
96906	Military Standards
98376	Zero Manufacturing Company

1-7. Recommendations for Equipment Publication Improvements

The reporting of errors, omissions, and recommendations for improving this publication by the individual user is encouraged. Reports should be submitted on DA Form 2028 (Recommended Changes to Publications) and forwarded direct to Commander, US Army Electronics Command, ATTN: AMSEL-MA-A, Fort Monmouth, NJ 07703.

SECTION II REPAIR PARTS FOR DIRECT SUPPORT, GENERAL SUPPORT AND DEPOT MAINTENANCE

SYMBOL CODE	FEDERAL STOCK NUMBER	DESCRIPTION REFERENCE NUMBER & MFR. CODE	USABLE ON CODE	UNIT OF MEAS	QTY INC IN UNIT	30-DAY DS MAINT ALLOWANCE			30-DAY GS MAINT ALLOWANCE			1 YR ALW PER EQUIP CNTGCTY	DEPOT MAINT ALW PER 100 EQUIP	ILLUSTRATIONS		
						(a)	(b)	(c)	(a)	(b)	(c)			(a)	(b)	
						1-20	21-50	51-100	1-20	21-50	51-100			FIG NO.	ITEM NO. OR REFERENCE DESIGNATION	
	6625-957-8595	FIXTURE, TEST, ACCELEROMETER M9404 (ASW-100V) (THIS ITEM IS NONEXPENDABLE)		EA	1											AL
A-L-A		BASE ASSEMBLY, TEST FIXTURE L40905 (02187)		EA	1											AL1
M-D		BAR, ALIGNMENT L40907 (02187)		EA	1								2-1			AL1AMP1
M-D		BASE, TEST FIXTURE L40916 (02187)		EA	1								2-1			AL1AMP2
P-H	5915-833-8231	PIN, STRAIGHT, HEADLESS L40940 (02187)		EA	1			*	*	*	*	*		2-1		AL1AH1
P-H	5305-056-6656	DRUM, MACHINE M019071 (96906)		EA	1			*	*	*	*	*		2-1		AL1AH2
P-H	5310-989-6395	WASHER, LINK M019071 (96906)		EA	1			*	*	*	*	*		2-1		AL1AH3
M-D		BRACKET, ANGLE M019071 (96906)		EA	2											AL1MP1
A-L		BRACKET ASSEMBLY, ACCELEROMETER M019071 (96906)		EA	1											AL1A2
P-H		BOX, ALIGNMENT M019071 (96906)		EA	1									2-1		AL1A2MP1
X-L-H		COVER, PANEL M019071 (96906)		EA	1											AL1A2MP1MP1
P-H	1230-111-9229	WIP, FLANK CLINCH M019071 (96906)		EA	4			*	*	*	*	*		2-1		AL1A2MP1H1
P-H	5340-565-9511	PLATE, LOFT M019071 (96906)		EA	1			*	*	*	*	*		2-2		AL1A2H1
P-H	5340-549-1439	PLATE, LOFT M019071 (96906)		EA	1			*	*	*	*	*				AL1A2H2
P-H-P	5995-232-2646	PANEL ASSEMBLY ELECTRICAL L40904 (02187)		EA	1			*	*	*	*	*		2-2		AL1A2W1
P-H	6145-226-2604	PANEL, POWER, ELECTRICAL L40904 (02187)		EA	8			*	*	*	*	*		2-1		AL1A2W1W1
P-H		PANEL, ELECTRICAL L40904 (02187)		EA	1			*	*	*	*	*		2-1		AL1A2W1P3
P-H	5940-966-3657	PANEL NIPPLE, ELECTRICAL L40904 (02187)		EA	1			*	*	*	*	*		2-1		AL1A2W1E1
P-H	5940-809-2123	TERMINAL, IIG M019071 (96906)		EA	1			*	*	*	*	*		2-2		AL1A2W1E2
P-H-P	5995-282-2652	PANEL ASSEMBLY ELECTRICAL L40904 (02187)		EA	1			*	*	*	*	*		2-2		AL1A2W2
P-H	6145-116-42376	PANEL, POWER, ELECTRICAL L40904 (02187)		EA	8			*	*	*	*	*		2-1		AL1A2W2W1
P-H		PANEL, ELECTRICAL L40904 (02187)		EA	1			*	*	*	*	*		2-1		AL1A2W2P3
P-H	5940-966-3657	PANEL NIPPLE, ELECTRICAL L40904 (02187)		EA	1			*	*	*	*	*		2-1		AL1A2W2E1
P-H	5940-809-4215	TERMINAL, IIG M019071 (96906)		EA	1			*	*	*	*	*		2-2		AL1A2W2E2

SECTION II REPAIR PARTS FOR DIRECT SUPPORT, GENERAL SUPPORT, AND. DEPOT MAINTENANCE (CONTINUED)

(1) SMR	(2)	(3) DESCRIPTION REFERENCE NUMBER & MFR. CODE	(4) USABLE ON CODE	(5) UNIT M E A S	(6) 30-DAY DS MAINT 1-20 21-50 51-100	(7) 30-DAY GS MAINT	(8) 1 YR DEPOT ALW PER MAINT (a)	(9)	(10) ILLUSTRATIONS (b) ITEM NO OR REPLACEMENT DESIGNATION
P-O	5920-280-8344	FUSE, CARTRIDGE FO2A25OV1-2AS (81349)		EA 2				2-2	A1A2F1
P-O	5920-280-8344	FUSE, CARTRIDGE FO2A25OV1-2AS (81349)		EA REF				2-2	A1A2F1
P-H	5920-892-931.1	FUSEHOLDER FHN26G1 (81349)		EA 2				2-2	A1A2XF1
P-H	5920-891-9311	FUSEHOLDER FHN26G1 (81349)		EA REF				2-2	A1A2XF2
P-H	5325-263-6632	GROMMET, RUBBER MS35489-6 (9606)		EA 1				2-2	A1A2H3
P-H	5325-290-6163	GROMMET RUBBER MS35489-13 (9606)		EA 2				2-2	A1A2H4
P-H	621~29th4846	INDICATOR, LIGHT 95-0410-0931-201 (72619)		EA 1				L-2	A1A2XDS2
P-H	6210-448-4297	INDICATOR, LIGHT 81-0408-0117-271 (72619)		E A 1				2-2	A1A2XDS1
P-H	5935-702-4199	JACK, TIP MS16108-2C (96906)		EA 1				2-2	A1A2J8
P-H	5935-109-0150	JACK, TIP MS16108-2C (96906)		E A 1				2-2	A1A2J7
P-O	5355-556-0145	MS91528-1K2B (96906)		EA 1				2-2	A1A2H5
P-O		LAMP, GLOW NE51 (81349)		EA 1				2-2	A1A2DS1
P-O	6240-155-8707	LAMP, INCANDESCENT MS13571-6 (96906)		EA 1				2-2	A1A2DS2
M-H		LEAD, ELECTRICAL 2578979 (07187)		E A 1					A1A2W3
P-H		CLIP, ELECTRICAL 60C (76545)		E A 1				2-1	A1A2W3P1
P-H	5940-966-357	CABLE NIPPLE, ELECTRICAL 6BLACK (76545)		EA 1				2-1	A1A2W3E1
P-H	5940-809-4120	TERMINAL, LUG MS25036-7 (96906)		EA 1				2-2	A1A2W3E2
P-H	6145~16&5027	WIRE, ELECTRICAL MILW13169AWG18BLK (81349)		EA 1			2 - 1		A1A2W3W1
M-H		LEAD SET, ELECTRICAL 2578980 (07187)		EA 1					A1A2W4
P-H	5310-857-5548	NUT, SELF-LOCKING HEXAGON MS20365D440A (96906)		EA 8				2-1	A1A2H6
P-H	5310-857-5547	NUT, SELF-LOCKING HEXAGON MS20365D440A (96906)		EA 3				2-2	A1A2H7
P-H	5940-356-2493	POST, BINDING DF30RC (58474)		EA 4				2-1	A1A2J3
P-H	5940-356-2453	POST, BINDING DF30RC (58474)		EA REF			2-1 1		A1A2J5
P-H	5940-269-2219	POST, BINDING DF30BC (58474)		EA REF				2-1	A1A2J4
P-H	594-269-2219	POST, BINDING DF30BC (58474)		EA REF		2	- 1		A1A2J6
P-H	5905-104-8336	RESISTOR, FIXED COMPOSITION RC20GF104J (81349)		E A 1			2 - 2		A1A2R1
P-H	5905-57s-0136	RESISTOR, FIXED, FILM RN70D1432F (81349)		EA 1			2 - 2		A1A2R2

SECTION II REPAIR PARTS FOR DIRECT SUPPORT, GENERAL SUPPORT, AND DEPOT MAINTENANCE (CONTINUED)

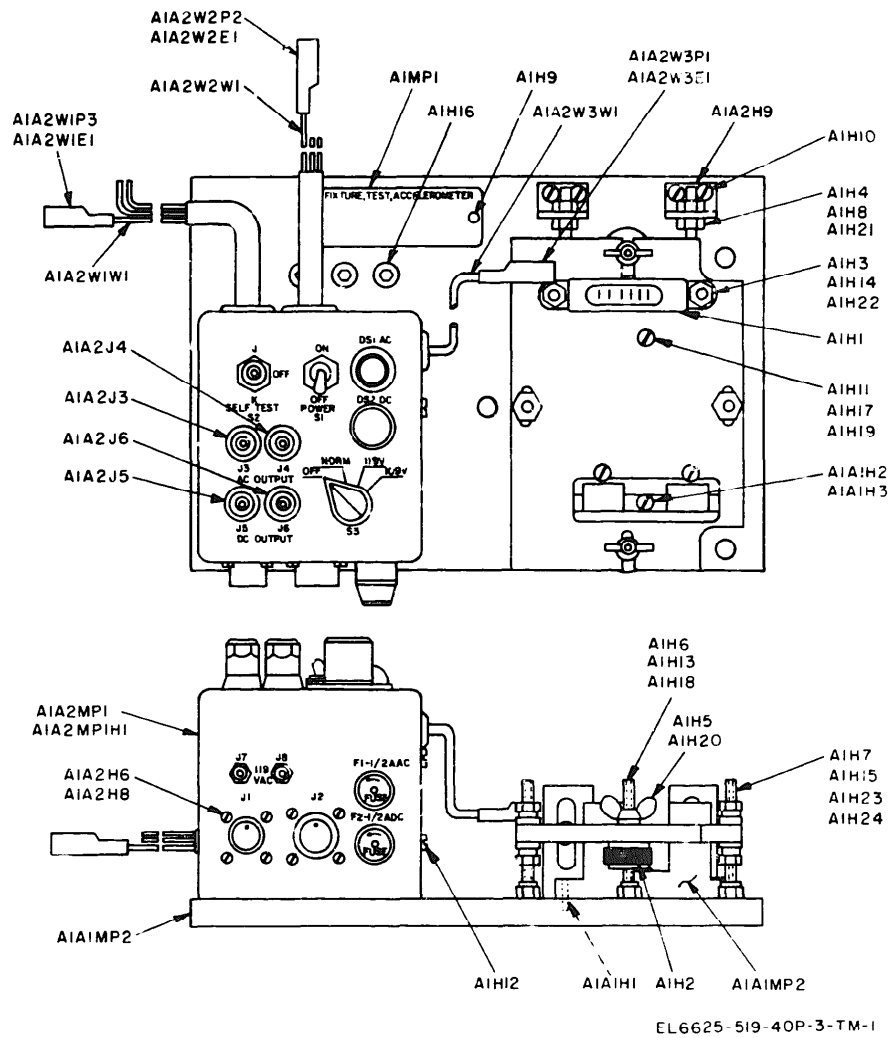
(1) SNR CODE	(2) FEDERAL STOCK NUMBER	(3) DESCRIPTION REFERENCE NUMBER & MFR. CODE	USABLE ON CODE	(4) UNIT OF MEAS	(5) QTY INC IN UNIT	(6) 30-DAY DS MAINT ALLOWANCE			(7) 30-DAY GS MAINT ALLOWANCE			(8) 1 YR ALW PER EQUIP CATEG	(9) DEPOT MAINT ALW PER 100 EQUIP	(10) ILLUSTRATIONS	
						(a) 1-20	(b) 21-50	(c) 51-100	(a) 1-20	(b) 21-50	(c) 51-100			(a) FIG NO.	(b) ITEM NO. OR REFERENCE DESIGNATION
P-H	6145-160-4775	WIRE, ELECTRICAL QW343TYPESSOFTSN (81349)		FT	1				*	*	*	*	*		ALA2W4W1
P-H	6145-754-8057	WIRE, ELECTRICAL QLW16878-4TYPEEAWG22BLK (81349)		FT	3				*	*	*	*	*		ALA2W4W2
P-H	6145-623-7224	WIRE, ELECTRICAL QLW16878-4TYPEEAWG22RED (81349)		FT	1				*	*	*	*	*		ALA2W4W3
P-H	6145-754-8058	WIRE, ELECTRICAL QLW16878-4TYPEEAWG22ORN (81349)		FT	2				*	*	*	*	*		ALA2W4W4
P-H	6145-557-5591	WIRE, ELECTRICAL QLW16878-4TYPEEAWG22YEL (81349)		FT	1				*	*	*	*	*		ALA2W4W5
P-H	6145-623-7225	WIRE, ELECTRICAL QLW16878-4TYPEEAWG22GRN (81349)		FT	2				*	*	*	*	*		ALA2W4W6
P-H	6145-578-6824	WIRE, ELECTRICAL QLW16878-4TYPEEAWG22BLU (81349)		FT	1				*	*	*	*	*		ALA2W4W7
P-H		WIRE, ELECTRICAL QLW16878-4TYPEEAWG22VIC (81349)		FT	1				*	*	*	*	*		ALA2W4W8
P-H	5305-638-0653	SCREW, MACHINE S35233-14 (96906)		EA	13				*	*	*	*	*	2-1	ALA2H8
P-H		SCREW, MACHINE S35233-16 (96906)		EA	1				*	*	*	*	*	2-1	ALA2H9
P-H	5305-543-2773	SCREW, MACHINE S35233-29 (96906)		EA	3				*	*	*	*	*	2-2	ALA2H10
P-H		SWITCH, RECTARY S350304-241 (07187)		EA	1				*	*	*	*	*	2-2	ALA2S3
P-H	5930-054-6415	SWITCH, TOGGLE S35059-22 (96906)		EA	1				*	*	*	*	*	2-2	ALA2S1
P-H	5930-201-3362	SWITCH, TOGGLE S35058-27 (96906)		EA	1				*	*	*	*	*	2-2	ALA2S2
P-H	5940-082-4652	ERMINAL, STUD MT12M (91663)		EA	5				*	*	*	*	*	2-2	ALA2E1
P-H	5940-082-4652	ERMINAL, STUD MT12M (91663)		EA	REF				*	*	*	*	*	2-2	ALA2E2
P-H		ERMINAL, STUD MT12M (91663)		EA	REF				*	*	*	*	*	2-2	ALA2E3
P-H	5940-082-4652	ERMINAL, STUD MT12M (91663)		EA	REF				*	*	*	*	*	2-2	ALA2E4
P-H	5940-082-4652	ERMINAL, STUD MT12M (91663)		EA	REF				*	*	*	*	*	2-2	ALA2E5
P-H		TRANSFORMER, POWER STEP-DOWN AND STEP-UP 3125 (10109)		EA	1				*	*	*	*	*	2-2	ALA2T1
P-H	5310-550-2715	ASHER, LOCK S35333-70 (96906)		EA	6				*	*	*	*	*	2-2	ALA2H11
A-D		WIRING, HARNESS BRANCHED 578982 (07187)		EA	1										ALA2W5
P-H		CONNECTOR, RECEPTACLE, ELECTRICAL T02E10-6S (77820)		EA	1				*	*	*	*	*	2-2	ALA2W5J1
P-H		CONNECTOR, RECEPTACLE, ELECTRICAL T02E12-10S (77820)		EA	1				*	*	*	*	*	2-2	ALA2W5J2
P-H		WIAL LEVEL 583DB2 (76883)		EA	1				*	*	*	*	*	2-1	ALH1
P-H	5310-151-5565	UT, PLAIN KNURLED 518555 (07187)		EA	2				*	*	*	*	*	2-1	ALH2
P-H	5310-934-9765	UT, PLAIN HEXAGON S35650-304 (96906)		EA	8				*	*	*	*	*	2-1	ALH3

SECTION II REPAIR PARTS FOR DIRECT SUPPORT, GENERAL SUPPORT, AND DEPOT MAINTENANCE (CONTINUED)

(1) S&P CODE	(2) FEDERAL STOCK NUMBER	(3) DESCRIPTION REFERENCE NUMBER & MFR. CODE	(4) UNIT OF MEAS	(5) QTY INC IN UNIT	(6) 30-DAY DS MAINT ALLOWANCE			(7) 30-DAY GS MAINT ALLOWANCE			(8) 1 YR ALW PER EQUIP CNTGNCY	(9) DEPOT MAINT ALW PER 100 EQUIP	(10) ILLUSTRATIONS	
					(a) 1-20	(b) 21-50	(c) 51-100	(a) 1-20	(b) 21-50	(c) 51-100			(a) FIG NO.	(b) ITEM NO. OR REFERENCE DESIGNATION
P-H	6145-754-8057	WIRE, ELECTRICAL MILW16878-4TY:EEAWG22BLK (81349)	FT	2				*	*	*	*	*		ALA2W5W1
P-H	6145-623-7224	WIRE, ELECTRICAL MILW16878-4TYFEEAWG22RED (81349)	FT	2				*	*	*	*	*		ALA2W5W2
P-H	6145-754-8058	WIRE, ELECTRICAL MILW16878-4TYFEEAWG22ORN (81349)	FT	1				*	*	*	*	*		ALA2W5W3
P-H	6145-995-1602	WIRE, ELECTRICAL MILW16878-4TYFEEAWG22YEL (81349)	FT	2				*	*	*	*	*		ALA2W5W4
P-H	6145-623-7225	WIRE, ELECTRICAL MILW16878-4TYFEEAWG22GRN (81349)	FT	2				*	*	*	*	*		ALA2W5W5
P-H	6145-578-6824	WIRE, ELECTRICAL MILW16878-4TYFEEAWG22BLU (81349)	FT	1				*	*	*	*	*		ALA2W5W6
P-H		WIRE, ELECTRICAL MILW16878-4TYFEEAWG22VIO (81349)	FT	2				*	*	*	*	*		ALA2W5W7
P-H	6145-686-4937	WIRE, ELECTRICAL MILW16878-4TYFEEAWG22WHTBLU (81349)	FT	1				*	*	*	*	*		ALA2W5W8
P-H	5310-989-0908	NUT, PLAIN HEXAGON MS35691-3 (96906)	EA	4				*	*	*	*	*	2-1	ALH4
P-H	5310-720-7798	NUT PLAIN WING MS35429-19 (96906)	EA	2				*	*	*	*	*	2-1	ALH5
P-H		NUT, SELF-LOCKING HEXAGON MS20365D832A (96906)	EA	2				*	*	*	*	*	2-1	ALH6
P-H		NUT, SELF-LOCKING HEXAGON MS20365D1032A (96906)	EA	4				*	*	*	*	*	2-1	ALH7
MD-H		PLATE, IDENTIFICATION 2580152-7 (07187)	EA	1									2-1	A1MP1
M-D		PLATE, MOUNTING ACCELEROMETER 2578917 (07187)	EA	1										A1MP2
P-H	5140-546-6083	PLUNGER, QUICK RELEASE S24 (01226)	EA	2				*	*	*	*	*	2-1	ALH8
P-H	5305-252-5313	SCREW, DRIVE MS21318-15 (96906)	EA	2				*	*	*	*	*	2-1	ALH9
P-H	5305-543-2773	SCREW, MACHINE MS35233-29 (96906)	EA	4				*	*	*	*	*	2-1	A1H10
P-H	5305-068-6534	SCREW, MACHINE MS35233-31 (96906)	EA	3				*	*	*	*	*	2-1	A1H11
P-H	5305-054-6656	SCREW, MACHINE MS55747-32 (96906)	EA	4				*	*	*	*	*	2-1	A1H12
P-H		SCREW, MACHINE MS35233-53 (96906)	EA	2				*	*	*	*	*	2-1	A1H13
P-H		SCREW, MACHINE MS51958-68 (96906)	EA	2				*	*	*	*	*	2-1	A1H14
P-H		SCREW, MACHINE MS35234-71 (96906)	EA	2				*	*	*	*	*	2-1	A1H15
P-H	5305-151-9922	SCREW, SHOULDERED 6737-1 (70318)	EA	3				*	*	*	*	*	2-1	A1H16
P-H	5310-722-5998	WASHER, FLAT MS15795-805 (96906)	EA	3				*	*	*	*	*	2-1	A1H17
P-H	5310-880-5978	WASHER, FLAT MS15795-807 (96906)	EA	2				*	*	*	*	*	2-1	A1H18

SECTION II. REPAIR PARTS FOR DIRECT SUPPORT, GENERAL SUPPLY, AND DEPOT MAINTENANCE (CONTINUED)

(1) SIR CODE	(2) FEDERAL STOCK NUMBER	(3) DESCRIPTION REFERENCE NUMBER & MFR. CODE	(4) UNIT OF MEAS	(5) QTY INC IN UNIT	(6) 30-DAY DS MAINT ALLOWANCE			(7) 30-DAY GS MAINT ALLOWANCE			(8) 1 YR ALW PER EQUIP CNTGTY	(9) DEPOT MAINT ALW PER 100 EQUIP	(10) ILLUSTRATIONS	
					(a) 1-20	(b) 21-50	(c) 51-100	(a) 1-20	(b) 21-50	(c) 51-100			(a) FIG NO.	(b) ITEM NO., OR REFERENCE DESIGNATION
P-H	5310-929-6395	WASHER, LOCK MS35338-136 (96906)	EA	11				*	*	*	*	*	2-1	ALH19
P-H	5310-933-8119	WASHER, LOCK MS35338-137 (96906)	EA	2				*	*	*	*	*	2-1	ALH20
P-H	5310-933-8121	WASHER, LOCK MS35338-139 (96906)	EA	4				*	*	*	*	*	2-1	ALH21
P-H	5310-209-1239	WASHER, LOCK MS35335-60 (96906)	EA	4				*	*	*	*	*	2-1	ALH22
P-H		WASHER, SPECIAL 3163 (00141)	EA	4				*	*	*	*	*	2-1	ALH23
P-H		WASHER, RECESSED 3173 (00141)	EA	4				*	*	*	*	*	2-1	ALH24



EL6625-519-40P-3-TM-1

Figure 2-1. Fixture, test, accelerometer.

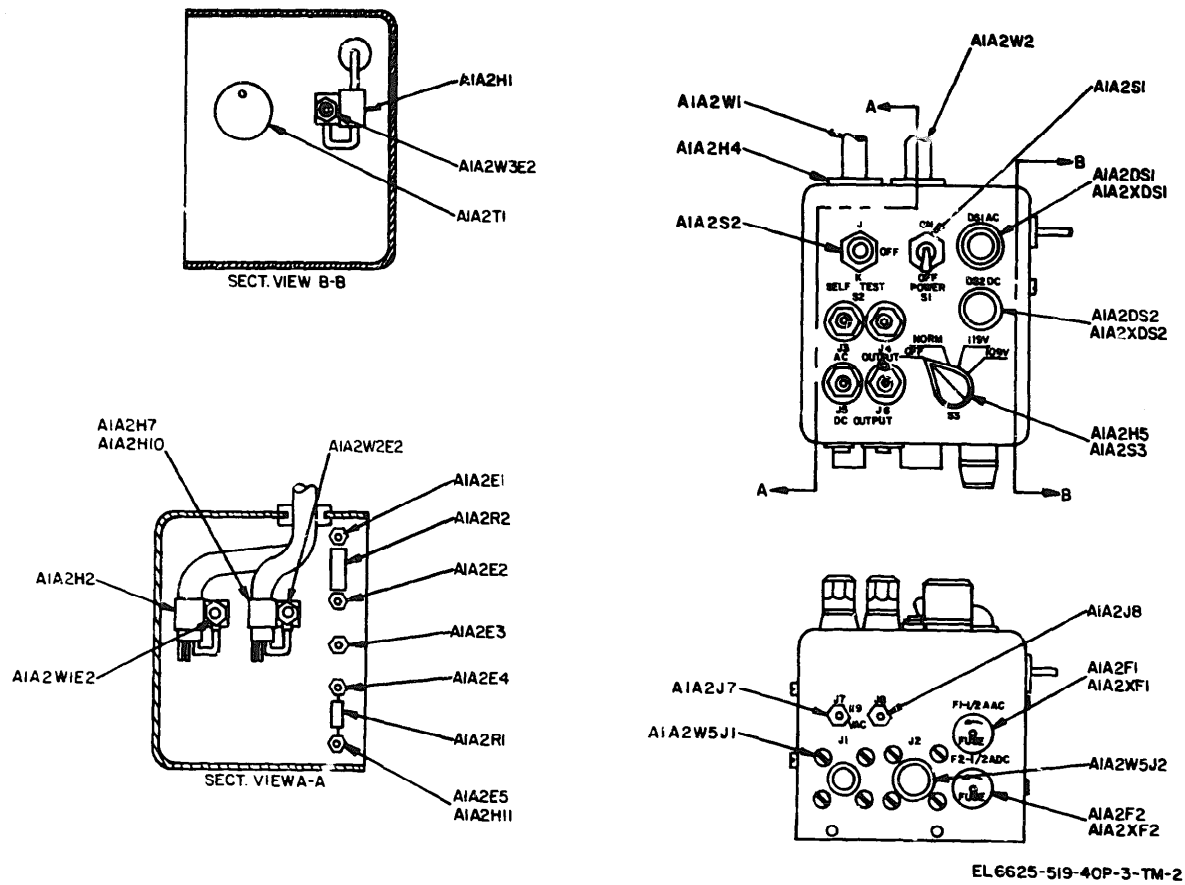


Figure 2-2. Chassis, electrical equipment.

SECTION III INDEX-FEDERAL STOCK NUMBER AND REFERENCE NUMBER CROSS REFERENCE
TO FIGURE AND ITEM NUMBER OR REFERENCE DESIGNATION

FEDERAL STOCK	FIGURE NUMBER	ITEM NUMBER OR REF. DESIGNATION	FEDERAL STOCK NUMBER	FIGURE NUMBER	ITEM NUMBER OR REF. DESIGNATION
1280-211-9219	2-1	A1A2MP1H1	5920-280-8344	2-2	A1A2F1
5305-054-6656	2-1	A1H12	5920-280-8344	2-2	A1A2F2
5305-054-6656	2-1	A1A1H2	5920-892-9311	2-2	A1A2XF1
5305-068-6534	2-1	A1H11	5920-892-9311	2-2	A1A2XF2
5305-151-9922	2-1	A1H16	5930-054-6415	2-2	A1A2S1
5305-253-5612	2-1	A1H9	5930-201-3362	2-2	A1A2S2
5305-543-2773	2-1	A1H10	5935-109-0150	2-2	A1A2J7
5305-543-2773	2-2	A1A2H10	5935-702-4199	2-2	A1A2J8
5305-638-0653	2-1	A1A2H8	5940-082-4652	2-2	A1A2E1
5310-141-5565	2-1	A1H2	5940-082-4652	2-2	A1A2E2
5310-209-1239	2-1	A1H22	5940-082-4652	2-2	A1A2E3
3310-550-3715	2-2	A1A2H11	5940-082-4652	2-2	A1A2E4
5310-720-7798	2-1	A1H5	5940-082-4652	2-2	A1A2E5
5310-722-5998	2-1	A1H17	5940-269-2219	2-1	A1A2J4
5310-857-5547	2-2	A1A2H7	5940-269-2219	2-1	A1A2J6
5310-857-5548	2-1	A1A2H6	5940-356-2493	2-1	A1A2J3
5310-880-5978	2-1	A1H18	5940-356-2493	2-1	A1A2J5
5310-929-6395	2-1	A1H19	5940-809-4120	2-2	A1A2W1E2
5310-929-6395	2-1	A1A1H3	5940-809-4120	2-2	A1A2W2E2
5310-933-8119	2-1	A1H20	5940-809-4x0	2-2	A1A2W3E2
5310-933-8121	2-1	A1H21	5940-966-3657	2-1	A1A2W1E1
5310-934-9765	2-1	A1H3	5940-966-3657	2-1	A1A2W2E1
5310-989-0908	2-1	A1H4	5940-966-3657	2-1	A1A2W3E1
5315-833-4231	2-1	A1A1H1	5995-482-2650	2-2	A1A2W1
5325-263-6632	2-2	A1A2H3	5995-482-2651	2-2	A1A2W2
5325-290-6163	2-2	A1A2H4	6145-126-1606	2-1	A1A2W1W1
5340-543-4394	2-2	A1A2H2	6145-126-1606	2-1	A1A2W2W1
5340-546-6083	2-1	A1H8	6145-160-4775		A1A2W4W1
5340-565-0011	2-2	A1A2H1	6145-160-5026	2-1	A1A2W3W1
5355-556-0145	2-2	A1A2H5	6245-557-3591		A1A2W4W5
5905-104-8336	2-2	A1A2R1	6145-578-6824		A1A2W4W7
5905-578-0136	2-2	A1A2R2	6145-578-6624		A1A2W5W6

SECTION III INDEX-FEDERAL STOCK NUMBER AND REFERENCE NUMBER CROSS REFERENCE
TO FIGURE AND ITEM NUMBER OR REFERENCE DESIGNATION (CONTINUED)

FEDERAL STOCK NUMBER	FIGURE NUMBER	ITEM NUMBER OR REF. DESIGNATION	FEDERAL STOCK NUMBER	FIGURE NUMBER	ITEM NUMBER OR REF. DESIGNATION	
			REFERENCE NO.	MFG. CODE	FIG. NO. REFERENCE DESIGNATION	
6145-623-7224		ALA2W4W3	MILW16878-4TYPE EAWG22GRN	81349	ALA2W5W5	
6145-623-7224		ALA2W5W2	MILW16878-4TYPE EAWG22GRN	81349	ALA2W4W4	
6145-623-7225		ALA2W4W6	MILW16878-4TYPE EAWG22GRN	81349	ALA2W5W3	
6145-623-7225		ALA2W5W5	MILW16878-4TYPE EAWG22GRN	81349	ALA2W4W3	
6145-686-4937		ALA2W5W8	MILW16878-4TYPE EAWG22RED	81349	ALA2W4W3	
6145-754-8057		ALA2W4W2	MILW16878-4TYPE EAWG22RED	81349	ALA2W5W2	
6145-754-8057		ALA2W5W1	MILW16878-4TYPE EAWG22VIO	81349	ALA2W4W8	
6145-754-8058		ALA2W4W4	MILW16878-4TYPE EAWG22VIO	81349	ALA2W5W7	
6145-754-8058		ALA2W5W3	MILW16878-4TYPE EAWG22WHTBLU	81349	ALA2W5W8	
6145-995-1602		ALA2W5W4	MILW16878-4TYPE EAWG22YEL	81349	ALA2W5W4	
6210-299-4846	2-2	ALA2XDS2	MILW16878-4TYPE EAWG22YEL	81349	ALA2W4W5	
6210-448-4297	2-2	ALA2XDS1	MS15571-6	96906	2-2 ALA2DS2	
6240-155-8707	2-2	ALA2DS2	MS15795-805	96906	2-1 ALH17	
6625-987-8595		AL1	MS15795-807	96906	2-1 ALH18	
<u>REFERENCE NO.</u>	<u>MFG. CODE</u>	<u>FIG. NO.</u>	<u>REFERENCE DESIGNATION</u>			
A583DB2	76883	2-1	ALH1	MS16108-1C	96906	2-2 ALA2J8
DF30BC	58474	2-1	ALA2J4	MS16108-3C	96906	2-2 ALA2J7
DF30BC	58474	2-1	ALA2J6	MS20365D1032A	96906	2-1 ALH7
DF30RC	58474	2-1	ALA2J3	MS20365D440A	96906	2-1 ALA2H6
DF30RC	58474	2-1	ALA2J5	MS20365D632A	96906	2-2 ALA2H7
FHN26G1	81349	2-2	ALA2XF1	MS20365D832A	96906	2-1 ALH6
FHN26G1	81349	2-2	ALA2XF2	MS21318-15	96906	2-1 ALH9
FO2A250V1-2AS	81349	2-2	ALA2F1	MS21919DG2	96906	2-2 ALA2H1
FO2A250V1-2AS	81349	2-2	ALA2F2	MS21919DG6	96906	2-2 ALA2H2
MILW13169AWG18)BLK	81349	2-1	ALA2W3W1	MS25036-7	96906	2-2 ALA2W1E2
MILW16878-4TYPE EAWG22BLK	81349		ALA2W4W2	MS25036-7	96906	2-2 ALA2W2E2
MILW16878-4TYPE EAWG22BLK	81349		ALA2W5W1	MS25036-7	96906	2-2 ALA2W3E2
MILW16878-4TYPE EAWG22BLU	81349		ALA2W4W7	MS35058-27	96906	2-2 ALA2S2
MILW16878-4TYPE EAWG22BLU	81349		ALA2W5W6	MS35059-22	96906	2-2 ALA2S1
MILW16878-4TYPE EAWG22GRN	81349		ALA2W4W6			

SECTION III INDEX FEDERAL STOCK NUMBER AND REFERENCE NUMBER CROSS REFERENCE
 TO FIGURE AND ITEM NUMBER OR REFERENCE DESIGNATION (CONTINUED)

FEDERAL STOCK NUMBER		FIGURE NUMBER	ITEM NUMBER OR REF. DESIGNATION		FEDERAL STOCK NUMBER		FIGURE NUMBER	ITEM NUMBER OR REF. DESIGNATION			
REFERENCE NO.	MFG. CODE	FIG. NO.	REFERENCE DESIGNATION	REFERENCE NO.	MFG. CODE	FIG. NO.	REFERENCE DESIGNATION	REFERENCE NO.	MFG. CODE	FIG. NO.	REFERENCE DESIGNATION
MS35233-14		2-1	ALA2H8	TMT12M		91663	2-2	ALA2H9			
MS35233-16		2-1	ALA2H9	Z64-72		98376		ALA2M1MP1			
MS35233-29		2-1	ALH10	0450-50		07187	2-1	ALA1H1			
MS35233-29		2-2	ALA2H10	047-13		56232	2-1	ALA2MPLH1			
MS35233-31		2-1	ALH11	2503304-241		07187	2-2	ALA2S3			
MS35233-53		2-1	ALH13	2518555		07187	2-1	ALH2			
MS35234-71		2-1	ALH15	2554279		07187	2-1	ALA1MP1			
MS35333-70		2-2	ALA2H11	2554281		07187		ALMP1			
MS35333-60		2-1	ALH22	2578915		07187		ALA1			
MS35336-136		2-1	ALH19	2578916		07187		ALA1MP2			
MS35338-136		2-1	ALA1H3	2578917		07187		ALMP2			
MS35338-137		2-1	ALH20	2578918		07187		ALA2MP1			
MS35338-139		2-1	ALH21	2578979		07187		ALA2W3			
MS35425-19		2-1	ALH5	2578980		07187		ALA2W4			
MS35489-13		2-2	ALA2H4	2578982		07187		ALA2W5			
MS35489-6		2-2	ALA2H3	2578992		07187		ALA2W2			
MS35650-304		2-1	ALH3	2580152-7		07187		ALMP1			
MS35691-3		2-1	ALH4	2580929		07187		ALA2W1			
MS51957-32		2-1	ALH12	2585782		07187		ALA2			
MS51957-32		2-1	ALA1H2	3163		00141		ALH23			
MS51958-68		2-1	ALH14	3173		00141		ALH24			
MS91528-1K2B		2-2	ALA2H5	5839818-001		81349		ALA2W1W1			
NE51		2-2	ALA2DS1	5839818-001		81349		ALA2W2W1			
PT02E12-10S		2-2	ALA2W5J2	60C		76545		ALA2W1P3			
PT02E10-6S		2-2	ALA2W5J1	60C		76545		ALA2W2P2			
QQW343TYPESSQFTSN			ALA2W4W1	60C		76545		ALA2W3P1			
RC20GF104J		2-2	ALA2R1	62BLACK		76545		ALA2W1E1			
RN70D1432F		2-2	ALA2R2	62BLACK		76545		ALA2W2E1			
S54		2-1	ALH8	62BLACK		76545		ALA2W3E1			
TMT12M		2-2	ALA2E1	63125		10109		ALA2T1			
TMT12M		2-2	ALA2E2	6737-1		70318		ALH16			
TMT12M		2-	ALA2E3	81-0408-0117-271		72619		ALA2XDS1			
TMT12M		2-2	ALA2E4	95-0410-0931-201		72619					

**SECTION IV INDEX-REFERENCE DESIGNATION
CROSS REFERENCE TO PAGE NUMBER**

REFERENCE DESIGNATION	PAGE NUMBER	REFERENCE DESIGNATION	PAGE NUMBER	REFERENCE DESIGNATION	PAGE NUMBER
A1		A1A1MP2	2-1	A1A2R2	2-2
A1H1	2-3	A1A2	2-1	A1A2S1	2-3
A1H2	2-3	A1A2DS1	2-2	A1A2S2	2-3
A1H3	2-3	A1A2DS2	2-2	A1A2S3	2-3
A1H4	2-4	A1A2E1	2-3	A1A2T1	2-3
A1H5	2-4	A1A2E2	2-3	A1A2W1	2-1
A1H6	2-4	A1A2E3	2-3	A1A2W1E1	2-1
A1H7	2-4	A1A2E4	2-3	A1A2W1E2	2-1
A1H8	2-4	A1A2E5	2-3	A1A2W1P3	2-1
A1H9	2-4	A1A2F1	2-2	A1A2W1W1	2-1
A1H10	2-4	A1A2F2	2-2	A1A2W2	2-1
A1H11	2-4	A1A2H1	2-1	A1A2W2E1	2-1
A1H12	2-4	A1A2H2	2-1	A1A2W2E2	2-1
A1H13	2-4	A1A2H5	2-2	A1A2W2P2	2-1
A1H14	2-4	A1A2H6	2-2	A1A2W2W1	2-1
A1H15	2-4	A1A2H3	2-2	A1A2W3	2-2
A1H16	2-4	A1A2H4	2-2	A1A2W3E1	2-2
A1H17	2-4	A1A2H7	2-2	A1A2W3E2	2-2
A1H18	2-4	A1A2H8	2-3	A1A2W3P1	2-2
A1H19	2-5	A1A2H9	2-3	A1A2W3W1	2-2
A1H20	2-5	A1A2H10	2-3	A1A2W4	2-2
A1H21	2-5	A1A2H11	2-3	A1A2W4W1	2-3
A1H22	2-5	A1A2J3	2-2	A1A2W4W2	2-3
A1H23	2-5	A1A2J4	2-2	A1A2W4W3	2-3
A1H24	2-5	A1A2J5	2-2	A1A2W4W4	2-3
A1MP1	2-1	A1A2J6	2-2	A1A2W4W5	2-3
A1MP2	2-4	A1A2J7	2-2	A1A2W4W6	2-3
A1A1	2-1	A1A2J8	2-2	A1A2W4W7	2-3
A1A1H1	2-1	A1A2MP1	2-1	A1A2W4W8	2-3
A1A1H2	2-1	A1A2MP1H1	2-1	A1A2W5	2-3
A1A1H3	2-1	A1A2MP1MP1	2-1	A1A2W5J1	2-3
A1A1MP1	2-1	A1A2R1	2-2	A1A2W5J2	2-3

SECTION IV INDEX- REFERENCE DESIGNATION
 CROSS REFERENCE TO PAGE NUMBER (CONTINUED)

REFERENCE DESIGNATION	PAGE NUMBER	REFERENCE DESIGNATION	PAGE NUMBER	REFERENCE DESIGNATION	PAGE NUMBER
A1A2W5W1	2-4				
A1A2W5W2	2-4				
A1A2W5W3	2-4				
A1A2W5W4	2-4				
A1W2W5W5	2-4				
A1A2W5W6	2-4				
A1A2W5W7	2-4				
A1A2W5W8	2-4				
A1A2XDS1	2-2				
A1A2XDS2	2-2				
A1A2XF1	2-2				
A1A2XF2	2-2				

By Order of the Secretary of the Army:

CREIGHTON W. ABRAMS
General, United States Army
Chief of Staff

Official:

VERNE L. BOWERS

Major General, United States Army
The Adjutant General

Distribution:

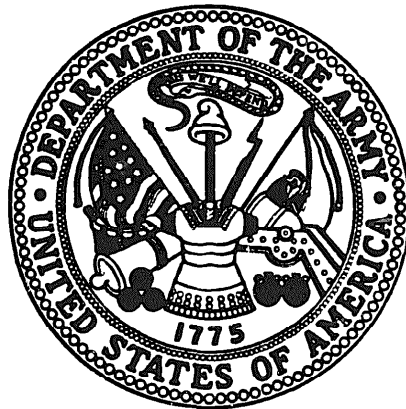
To be distributed in accordance with **DA Form** 12-36, Section I (qty, rqr block no. 233) Direct and General Support Maintenance requirements for **AN/ASW-12**.

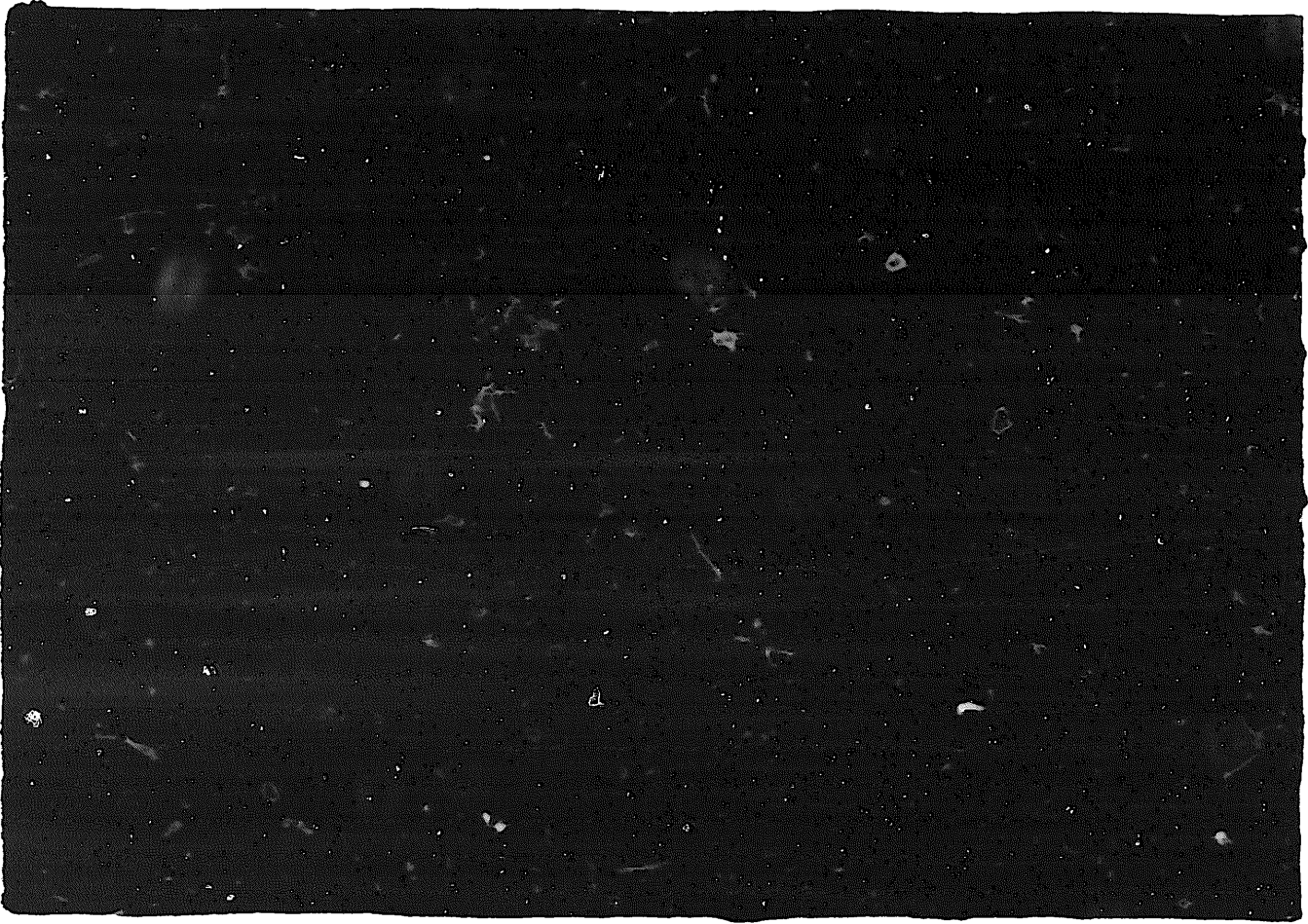
★ U.S. GOVERNMENT PRINTING OFFICE: 1973-748111/710

END

01-03-83

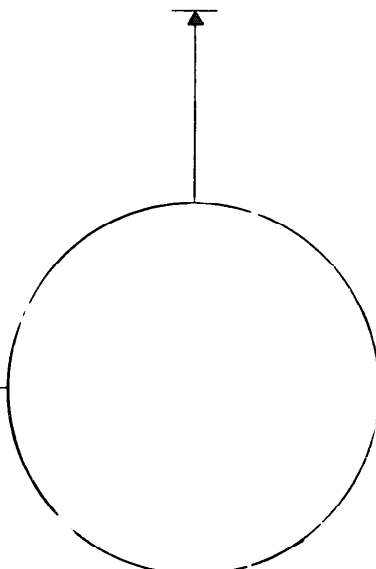
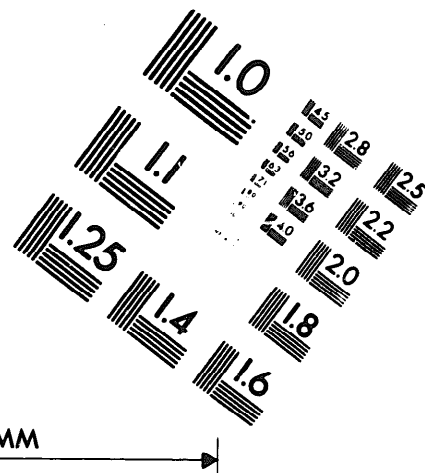
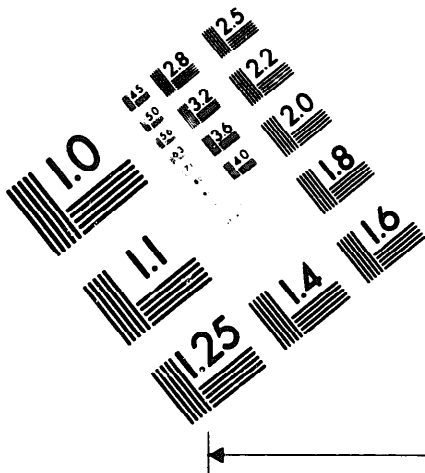
DATE





DEPARTMENT OF THE ARMY

MICROFORM
TEST TARGET



1.0 mm (e= .61 mm)

ABCDEFGHIJKLMN^oQRSTUVWXYZ1234567890
abcdefghijklmnopqrstu^vwxyz\$e£/%#½¼¾—=+x&@*

1.5 mm (e= 1.09 mm)

ABCDEFGHIJKLMN^oQRSTUVWXYZ1234567890
abcdefghijklmnopqrstu^vwxyz\$e£/%#½¼¾—=+x&@*

2.0 mm (e= 1.37 mm)

ABCDEFGHIJKLMN^oQRSTUVWXYZ
abcdefghijklmnopqrstu^vwxyz
1234567890\$e£/%#½¼¾—=+x&@*

2.5 mm (e= 1.77 mm)

ABCDEFGHIJKLMN^oQRSTUVWXYZ
abcdefghijklmnopqrstu^vwxyz
1234567890\$e£/%#½¼¾—=+x&@*

150 MM

1.0 mm (e= .61 mm)

ABCDEFGHIJKLMN^oQRSTUVWXYZ1234567890
abcdefghijklmnopqrstuvwxyz\$e£/%#½¼¾—=+x&@*

1.5 mm (e= 1.09 mm)

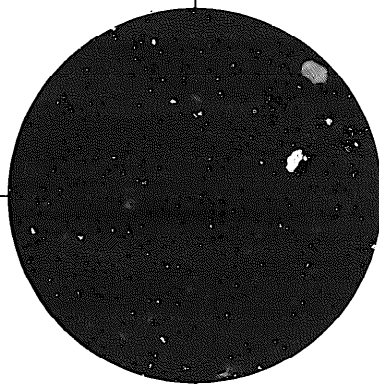
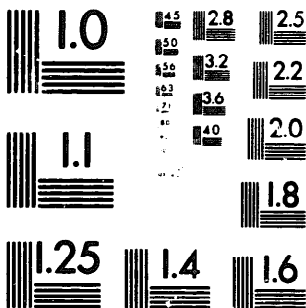
ABCDEFGHIJKLMN^oQRSTUVWXYZ1234567890
abcdefghijklmnopqrstu^vwxyz\$e£/%#½¼¾—=+x&@*

2.0 mm (e= 1.37 mm)

ABCDEFGHIJKLMN^oQRSTUVWXYZ
abcdefghijklmnopqrstu^vwxyz
1234567890\$e£/%#½¼¾—=+x&@*

2.5 mm (e= 1.77 mm)

ABCDEFGHIJKLMN^oQRSTUVWXYZ
abcdefghijklmnopqrstu^vwxyz
1234567890\$e£/%#½¼¾—=+x&@*



200 MM

250 MM

